

Contacts

PO Box 3261
Christchurch

Email

Secretary@sir.org.nz

Chairman

P McQuinn
H 3 358 8938
M 27 239 5969

Secretary

P Bell
H 3 358 9929
M 27 432 5001

Course Manager

T Wilson
H 3 437 0908
M 21 134 1073

Complex

T 3 435 0628
F 3 435 0627

Facilities

Course Hire
Kitchen /
Lounge Hire
Souvenirs
Shop Sales

Sponsors

Clark Boyce
incorporating
benseman murfit

Level 1, 104
Victoria Street
PO Box 11299
Christchurch, New
Zealand

**GLOBAL CULTURE
GROUP LIMITED**



Kolourcare
The #1 online
and phone
www.kolourcare.co.nz



meridian



**Jim Little
Upholstery**



The new year is now with us and for many, rowing featured quite highly in their list of activities. The weather seems to have been generally quite kind to all concerned and this makes the rather traditional activities of outdoor pursuits high on the agenda.

Of course many of us "find" new muscles and realise that we are another year older. This does make for some reconciliation in ones own mind about where we are heading in the future and what we are going to be involved with this year.

We have been very fortunate to have had a number of people and groups attend the Lake and assist with the activities that keep the international Rowing Course active and operational.

We hope this finds everyone well rested and ready for another year of action.

Course

This Christmas saw some major work done on the course with all the buoys removed, cleaned and re-equipped with the new attachment hardware. The lane wires are now made of Kevlar and are made in 250 meter sections with each of the eight sections connected together with chain. This has been a new experience for us and there have been a number of difficulties to overcome to ensure that the buoys stay on their correct location.

T Wilson, the Course Manager has said that this was a real learning experience but we have developed a process for laying the course that works well. The picture to the right shows one of the new lane wires spooled onto the drum in readiness for laying.



We have been very grateful for the assistance of many people who have ensured the course was laid in time for the Otago Champs. In particular we thank the North End Rowing Club and the pupils from St Hildas Collegiate School, Otago Boys High School and Queens High School for the assistance.

There is still quite a lot of work to do on the course to ensure its stability and this will involve a lot of assistance from other groups. We hope that their benevolence will be available to allow us to increase the stabilization of the course and the lake edge.

Those who were at the Otago Championship regatta may have noticed the alignment boards and the sighting boards have been painted. There is little doubt that they are quit an improvement and we thank G Bond for his assistance here.

Environmental Protection

The invasive algae Didymo has been found in Lake Ruataniwha and the Department of Conservation says it is concerned it could be spread to more rivers and might impact on endangered native flora and fauna.

Contacts

PO Box 3261
Christchurch

Email

Secretary@sir.org.nz

Chairman

P McQuinn
H 3 358 8938
M 27 239 5969

Secretary

P Bell
H 3 358 9929
M 27 432 5001

Course Manager

T Wilson
H 3 437 0908
M 21 134 1073

Complex

T 3 435 0628
F 3 435 0627

Facilities

Course Hire
Kitchen /
Lounge Hire
Souvenirs
Shop Sales

Sponsors

Clark Boyce
incorporating
bensenman murfit

Level 1, 104
Victoria Street
PO Box 11259
Christchurch, New
Zealand

**GLOBAL CULTURE
GROUP LIMITED**



Kolourcare
For all things auto,
and more products
www.kolourcare.co.nz



meridian



**Jim Little
Upholstery**



Pub Charity
THE HEART OF COMMUNITY FUNDING



Everyone using the lake has responsibility here to ensure they abide by the requirements of the Bio-security Act. The Department and MAF Biosecurity New Zealand are reminding people to **'Check, Clean, and Dry'** their gear between waterways to prevent the spread of Didymo to other rivers and areas. "While the long term effect is unknown, Didymo can form dense mats which may affect invertebrate populations. We are appealing to people rowing, boating, kayaking, fishing or carrying out other activities in the area, to make sure they **'Check, Clean and Dry'** their gear between waterways.

If any boots, socks or other gear are put in the water then these should be cleaned afterwards using **'Check, Clean and Dry'** procedures before being put in any other waterway. MAF Biosecurity New Zealand Didymo response manager Chris Bicknell said this highlighted the need for every fresh waterway user, no matter where they are, to **'Check, Clean and Dry'** their gear between waterways. "Individual water way users have a crucial role in slowing the spread of Didymo and other aquatic pests. **'Check, Clean, and Dry'** is our best defence. For details on Didymo, see

<http://www.biosecurity.govt.nz/pests-diseases/plants/didymo/index.htm>

Fire is also an issue as the temperatures rise. There is a complete a fire ban in place but even without that care around fires is essential. It was disappointing to observe some individuals ignoring this over the Christmas period.

Safety

We cannot compromise on safety and This begins with **you!** As mentioned last month, we have to be more vigilant so please make sure you know the requirements and ensure you follow them. Recently we found that with rough conditions on the water the hand held radios are not particularly effective. It has been found that total reliance on radios in a single radio band is misplaced and SIR is working with radio equipment suppliers to find a solution. This is not helped by the numerous conversations that occur when coaching so other alternatives are being investigated.

Another area of safety concern relates to signage. We found that the Lake Closed notice we used previously was not seen by boatees in large SUV's. The sandwich board style of sign was easily put out of the way or turned over by an SUV so an alternative had to be sought. The result is a fold-down style of road sign. We sincerely thank Fulton Hogan for there assistance with the sign procurement.



Contacts

PO Box 3261
Christchurch

Email

Secretary@sir.org.nz

Chairman

P McQuinn

H 3 358 8938

M 27 239 5969

Secretary

P Bell

H 3 358 9929

M 27 432 5001

Course Manager

T Wilson

H 3 437 0908

M 21 134 1073

Complex

T 3 435 0628

F 3 435 0627

Facilities

Course Hire

Kitchen /

Lounge Hire

Souvenirs

Shop Sales

Sponsors

Clark Boyce
incorporating
benseman murfit

Level 1, 104
Victoria Street
PO Box 11259
Christchurch, New
Zealand

**GLOBAL CULTURE
GROUP LIMITED**



Kolourcare
The #1 choice for
all things paint and
decor products
www.kolourcare.co.nz



meridian



**Jim Little
Upholstery**



Fencing

The completion of the fencing is quite a significant milestone and this is the first Christmas period that we have had with the fence. Those who worked through that period have told just how important it has been given the large number of people who have been ejected from the Township. It is unfortunate that the go to this area which creates problems for both SIR and the Community Board.

There are a number of possible solutions here and SIR will continue to liaise with the Community Board and the Camping Ground owner to ensure the safety and integrity of the area is maintained.

Grounds

The maintenance of the grounds is rather important and we are fortunate to have Alex Woods to cut the grass. This has been made easier with the ride on and it has now done a lot of work. As with all mechanical things it does require ongoing maintenance.

Late last year, we were donated some grass seed from some of our supporters in the Agricultural sector. We really appreciated this gesture and we feel certain the rowers will notice the increase in the grass in the boat park where walking in bare feet has tended to be a little painful.



We have also had assistance with picking up the larger rocks and we thank those involved for their efforts. All these little things help us make the facilities more user friendly. There are some areas where we will need to have some grit laid to make sure the ground is even and this activity should be underway next week.

Some of you may have also noticed just how well some of the trees are doing. The general gardening and the clean up around the area is very good. Much of this has been due to the assistance of G Bond who has really assisted us with keeping the standard of the grounds up. The other action has been the completion of the irrigation system. Given more water and there is a better change that the grass will indeed grow!

There is still a lot of work to do with parking. There is a plan to ensure that there are no vehicles between the locations of the boats and the water. This means that the trailers on the north side of the road can be effectively used as additional boat storage. A wire has to be installed to ensure this is achieved.

The main public car park has been a shambles for many years and the time has come for us to address this. A formal layout is to be designed and the appropriate edging and fencing installed to suit. It will also give some protection for the tent sites.

Contacts

PO Box 3261
Christchurch

Email

Secretary@sir.org.nz

Chairman

P McQuinn
H 3 358 8938
M 27 239 5969

Secretary

P Bell
H 3 358 9929
M 27 432 5001

Course Manager

T Wilson
H 3 437 0908
M 21 134 1073

Complex

T 3 435 0628
F 3 435 0627

Facilities

Course Hire
Kitchen /
Lounge Hire
Souvenirs
Shop Sales

Sponsors

Clark Boyce
incorporating
benseman murfit

Level 1, 104
Victoria Street
PO Box 11229
Christchurch, New
Zealand


GLOBAL CULTURE
GROUP LIMITED



Kolourcare
The #1 online retailer
of all things arts and design products
www.kolourcare.co.nz



meridian



Jim Little
Upholstery

Zait radio
communications

Pub Charity
THE HEART OF COMMUNITY FUNDING

Fuelquip

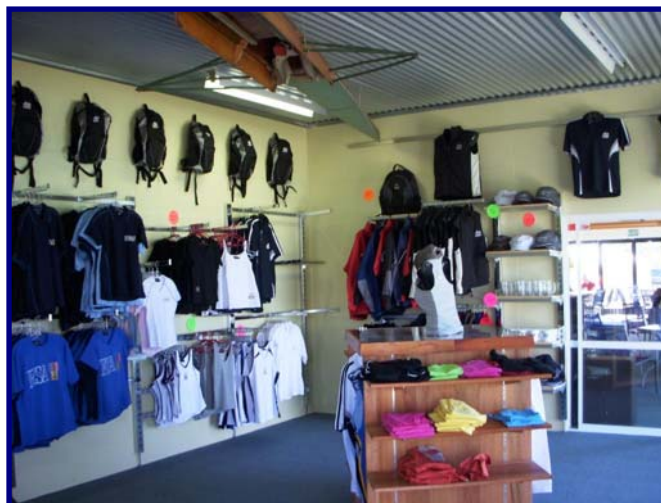
Newsletter

We also have to address the tent sites as the full layout work has not been completed. Although it is well advanced, it needs to be fully realised for the Maadi Cup as that is when we expect the tents to be fully utilised.

Row Shoppe

The previous Newsletter mentioned the work being done to upgrade the Row Shoppe and the MacRae Lounge. The carpet has now been laid and we have been grateful for the assistance of N & P Jemmett who completed the laying.

The impact has been quite dramatic. The echo that persisted has gone and there is a much warmer and closer atmosphere here.



The pictures shows the changes that have been implemented here and how the MacRae Lounge and the shop are more integrated. The new furniture makes the environment much more pleasant. This leaves the lighting to be completed to make the whole change complete.

Raffle

Ticket sales for the raffle are now under way. The Raffle Committee has set up a volume sales incentive for Clubs and Schools which offer a 10% rebate on volume sales of more that 10 books.. This will be a very good fundraising opportunity and we have had some keen interest from groups who want to be involved with this. (Contact W Blazey (3-388 5630).

One aspect of the raffle that has gone unmentioned is the benefactor who donated this section to help SIR improve the course infrastructure. While we have focussed on the section and the selling potential for other sections in the sub division we are truly indebted to F Hocken for his kind donation. It is this level of support that we needed to ensure the facilities are maintained in good operating condition. So, thanks for this Frank.



Iron Lung

For the uninitiated, this is the building at the start. This is an essential part of our operation and the exterior has been replaced and the door from the old secretary's office has been relocated.

Unfortunately, the interior needs some work and it appears that we need to see about getting a new power feed into this building.



Contacts

PO Box 3261
Christchurch

Email

Secretary@sir.org.nz

Chairman

P McQuinn
H 3 358 8938
M 27 239 5969

Secretary

P Bell
H 3 358 9929
M 27 432 5001

Course Manager

T Wilson
H 3 437 0908
M 21 134 1073

Complex

T 3 435 0628
F 3 435 0627

Facilities

Course Hire
Kitchen /
Lounge Hire
Souvenirs
Shop Sales

Sponsors

Clark Boyce
incorporating
benseman murfit

Level 1, 104
Victoria Street
PO Box 11229
Christchurch, New
Zealand

**GLOBAL CULTURE
GROUP LIMITED**



Kolourcare
For all things arts
and design
www.kolourcare.co.nz



meridian

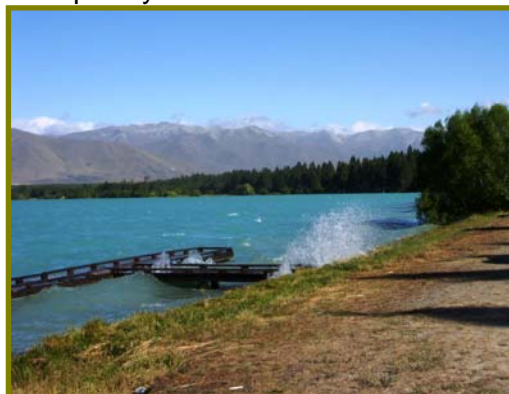


**Jim Little
Upholstery**



Newsletter

While working on the Iron lung the bases for the temporary boat racks at the start were installed. This means that there will be a place to store the boats when there is a sudden weather change. Such a change was observed at the Otago Champs and the Photo shows the impact at the start. The surface of the wharf was lifting with the waves and clearly we need to do maintenance work on this structure to ensure its continued availability.



We have been working with Alpine Energy on this project but we have not had anything concrete as yet. However, with the MAADI cup regatta being so late, we will need to have the power there by the end of March. Any assistance to expedite this would be appreciated.

Miscellaneous

There are a number of activities that require our attention and they will be progressed over the next few months.

- The Start area will be upgraded with a new power feed. This will mean that the 20 yr old system for recording the start will be upgraded to one based on the new "freeze frame system used at Karapiro.
- We are indebted to some of our rural colleagues who donated us some grass seed. This coupled with some water has seen a significant change in the environment. Thanks for that.
- We still have to sort out the rocks between the shore and lane 1. We do want to have the shoreline re-battered but until a suitable benefactor arrives please be careful when rowing to the start.
- We are always looking for volunteers to assist with running the regatta. If you are present and available please contact the regatta secretary.

Accommodation

At this time of the year there is always a premium on accommodation. There have been numerous times where changes to plans mean that accommodation ends up over booked or vacant. It is perhaps timely to remind all those who have booked for the Maadi Cup Regatta to confirm their accommodation requirements.

The picture on the right shows Lake Ruataniwha and the International rowing course in the foreground with Twizel on the right. The large lake is Lake Pukaki and the snow capped mountain is Mt Cook. This was taken from a commercial flight @ 19000 ft. Not many rowing courses can boast this sort of scenery.



Contacts

PO Box 3261
Christchurch

Email

Secretary@sir.org.nz

Chairman

P McQuinn
H 3 358 8938
M 27 239 5969

Secretary

P Bell
H 3 358 9929
M 27 432 5001

Course Manager

T Wilson
H 3 437 0908
M 21 134 1073

Complex

T 3 435 0628
F 3 435 0627

Facilities

Course Hire
Kitchen /
Lounge Hire
Souvenirs
Shop Sales

Sponsors



Level 1, 104
Victoria Street
PO Box 11229
Christchurch, New
Zealand



Jim Little
Upholstery



Newsletter

Tent Site allocation - 2008

Site	ST SCHOOL/CLUB	Site	ST SCHOOL/CLUB
1	Villa Maria College	1a	.
2	Westlake Boys/GIRLS	2a	Westlake Boys/GIRLS
3	Marsden School	3a	.
4	Rangi Ruru Girls School	4a	.
5	Rangi Ruru Girls School	5a	.
6	Marlborough Boys / Blenheim RC	6a	Onslow College
7	St Bedes College	7a	.
8	Marlborough Girls College / Wairau RC	8a	.
9	Waikato Diocesan School/Timaru RC	9a	St Hildas Collegiate
10	Craighead Diocesan School	10a	.
11	Timaru Boys High School	11a	.
12	Christchurch Girls High School	12a	Mt Aspiring High School
13	Otago Boys High School	13a	Paraparaumu College
14	Columba College	14a	St Marys College
15	Waitaki Girls/Boys/St Kevins/ Oamaru RC	15a	Hamilton Boys
16	Otago Girls High School	16a	Wanganui High Sc
17	Wakatipu Rowing Club	17a	.
18	Burnside High School	18a	.
19	Roncalli College	19a	.
20	Christchurch Boys High School	20a	.
21	Avonside Girls HS	21a	.
22	Tauranga Girls College Rowing	22a	.
23	St Margarets College	23a	Auckland Diocesan School
24	Christs College	24a	Kings College
25	Timaru Girls High School	25a	.
W A L K W A Y			
26	Ashburton College	26a	.
27	Nelson College for Boys	27a	.
28	Nelson College for Girls	28a	.
29	St Peters School	29a	.
30	Westlake Girls	30a	.
31	Marian College	31a	.
32	St Andrews College	32a	St Kentigern Col
33	St Pauls Collegiate	33a	.
34	Otumoetai College	34a	.
35	Wellington College	35a	.
36	Epsom Girls Grammar	36a	.
37	Bethlehem College	37a	.
38	Wellington Girls College	38a	.
39	St Thomas of Canterbury	39a	.
40	Wanganui Collegiate School	40a	.
41	Sacred Heart Girls College	41a	.
42	Te Awamutu College	42a	.
43	MacLeans College	43a	.
44	Queen Margaret College	44a	.
45	Takapuna Grammar School	45a	.
46	Kings High School	46a	.