

Contacts

PO Box 3261
Christchurch

Email

Secretary@sir.org.nz

Chairman

P McQuinn

H 3 358 8938

M 27 239 5969

Secretary

P Bell

H 3 358 9929

M 27 432 5001

Course Manager

T Wilson

H 3 437 0908

M 21 134 1073

Complex

T 3 435 0628

F 3 435 0627

Facilities

Course Hire

Kitchen /

Lounge Hire

Souvenirs

Shop Sales

Sponsors

Clark Boyce
incorporating
benseman murfit

Level 1, 104
Victoria Street
PO Box 11259
Christchurch, New
Zealand


**GLOBAL CULTURE
GROUP LIMITED**



Kolourcare
For all things with
colour and shine
www.kolourcare.co.nz



meridian



**Jim Little
Upholstery**

Zait radio
communications

Pub Charity
THE HEART OF COMMUNITY FUNDING

Fuelquip

The Aoraki 1000 Regatta was held during the last weekend in October and it proved to be an opportunity to take stock of a number of aspects about the course, the operation of the facilities and the ongoing course development. Some of these aspects will be covered in the following pages.

It has been rather unfortunate that the weather in recent times has been so variable. We have received reports of a number of difficulties caused by the weather and we take this opportunity to remind everyone that there is no substitute for being prepared.

It is during times when there are weather issues that the skills of backing into the start and surviving a quick dip can be developed. We encourage everyone to take the time to develop these skills.

Course

With the last regatta before Christmas now over we can look forward to lifting the course and completing the full repair work needed on the lane wires, laterals and buoys. It has been noted that the course has had a reasonable amount of use in recent weeks and is perhaps one of the advantages of having the course down over the winter months.

There is still some work to do on the new lane wires to make them ready for the coming regatta season. The next shipment of buoys are nearly here and Trevor will be organizing another working bee to update and relay the course.

Environmental Protection

Didymo (apty called rock snot) is still a major problem in the area. We know that it is prevalent in much of the Waitaki and some of the feeder streams. The mantra "wash, Clean, Dry" is the best way to protect the environment.

It was most encouraging to see how readily so many rowers washed their boats automatically. SIR hopes to get an improved washing system in place to make it even easier to complete this task. Although very expensive, the latest detergent called "SNOTTOFF" seems to be very effective.

For details on Didymo, see

<http://www.biosecurity.govt.nz/pests-diseases/plants/didymo/index.htm>

Fire is also an issue as the temperatures rise. There will likely be a fire ban in place but even without that care around fires is essential.

Safety

We cannot compromise on safety and there is a measure of slackness creeping in. The numbers of attendees at the Safety briefings have been dwindling and it does not seem to be appreciated that this seems to put SIR at risk should there be an incident. We therefore need to be more vigilant here and the decision is that unless the Club/School Safety representative is present, their crews will not be allowed to row until they have had a safety briefing. A roll call will be made to ensure this is recorded.

This decision was not taken lightly and some considerable thought has gone into it. We appreciate this may appear to be a rather draconian approach but the risk is too great. We have found first hand just how quickly any goodwill disappears when there is a problem.

Contacts

PO Box 3261
Christchurch

Email

Secretary@sir.org.nz

Chairman

P McQuinn

H 3 358 8938

M 27 239 5969

Secretary

P Bell

H 3 358 9929

M 27 432 5001

Course Manager

T Wilson

H 3 437 0908

M 21 134 1073

Complex

T 3 435 0628

F 3 435 0627

Facilities

Course Hire
Kitchen /
Lounge Hire
Souvenirs
Shop Sales

Sponsors

Clark Boyce
incorporating
benseman murfit

Level 1, 104
Victoria Street
PO Box 11259
Christchurch, New
Zealand


**GLOBAL CULTURE
GROUP LIMITED**



Kolourcare
For all things arts,
and more products
www.kolourcare.co.nz



meridian



**Jim Little
Upholstery**



The picture on the right highlights another problem. Changing over boats behind the dais means that the boat marshal has not idea who is on the course and this creates a serious safety problem. This sort of change over activity will not be allowed to continue here as a general practice. All boats should return to the boat park to change over crews.



Another observation has been the rather flippant attitude to safety by those who should know better. Some Coaches in particular are gaining a reputation for this attitude which is clearly not setting a very good example. The sort of incident referred to here is the non-wearing of life jackets by coxswains. Other instances are entering races that are so close together that the crew could possibly hope to get to the start on time and then expect the Race Committee to delay the whole regatta while they get crews to the start.

Aoraki 1000 Regatta

Being the first regatta of its type for the season it usually is a steep learning curve for all in terms of coming to grips with the operational aspects of running a regatta. This time the regatta start was delayed because of the wind chill. While the water was rowable, especially for "fours" and "Eights" the wind chill was just too great. This is one of the very few times this has had to be done but it does raise a very real concern about the weather conditions that could apply during the New Zealand Secondary Schools Regatta in April next year!

Fortunately the temperature did improve and as can be seen from the pictures (below) a good days rowing did eventuate. Some even managed to have a dip!



Warm clothing was the order of the day and it is fortunate that the Row Shoppe is available to assist those who don't have warm enough clothing.

Other Functions

In recent weeks we have hosted a couple of other functions. One was the Kayak regatta and we have had some very favourable comments about the facilities. After all, a laned course with timing facilities are the basic requirements and we are well able to supply them.

A second function was a wedding in which the Barge, appropriately fitted out was used to bring the bride in to the wharf from the 1000 meter mark. The ceremony took place on the Dais which was appropriately set up for the occasion.

Contacts

PO Box 3261
Christchurch

Email

Secretary@sir.org.nz

Chairman

P McQuinn
H 3 358 8938
M 27 239 5969

Secretary

P Bell
H 3 358 9929
M 27 432 5001

Course Manager

T Wilson
H 3 437 0908
M 21 134 1073

Complex

T 3 435 0628
F 3 435 0627

Facilities

Course Hire
Kitchen /
Lounge Hire
Souvenirs
Shop Sales

Sponsors

Clark Boyce
incorporating
benseman murfit

Level 1, 104
Victoria Street
PO Box 11229
Christchurch, New
Zealand

**GLOBAL CULTURE
GROUP LIMITED**



Kolourcare
The art of colour care
and more products
www.kolourcare.co.nz



meridian



**Jim Little
Upholstery**



Pub Charity
THE HEART OF COMMUNITY FUNDING



The Function itself was held in the MacRae Lounge. A number of people could not get over the transformation and the environment that was created here.

Again there have been many favourable comments about the facilities and their suitability for such occasions. This really is a tribute to Catherine and Trevor Wilson in the way they keep these facilities so well prepared for the various demands placed on them by the venue patrons..

Fencing

As many will know, a contract has been let to fence the property to protect the equipment, reduce the dumping of rubbish and minimise potential injury claims. We thank the Mackenzie District Council for their



assistance with achieving this goal. The picture (above) shows the fence posts installed along Max Smith Drive from the western property boundary.

Track

Many, especially Coaches, who have made the walk from the boat launch area have commented on the difficulty of getting from there to the Dais area. We have now had a track made around the point just above the water line to link with the boat launch area.



Although some more tidy-up work has yet to be done the general layout can be seen on the picture right.

Tent Sites

A lot of work has been done on the tent sites to ensure we have a significant improvement over previous years. Further access to the lake in the boat park has provided us with more material to develop the tent sites. This will mainly affect the back row where the area is now elevated.

The picture on the right was taken from about site 35 looking towards the finish and clearly shows the two levels.



The next picture was taken from site 25 and shows how the second tier is situated. This will mean that there will have to be restrictions placed on the parking to ensure the tents on the rear sites are not compromised.

Contacts

PO Box 3261
Christchurch

Email

Secretary@sir.org.nz

Chairman

P McQuinn
H 3 358 8938
M 27 239 5969

Secretary

P Bell
H 3 358 9929
M 27 432 5001

Course Manager

T Wilson
H 3 437 0908
M 21 134 1073

Complex

T 3 435 0628
F 3 435 0627

Facilities

Course Hire
Kitchen /
Lounge Hire
Souvenirs
Shop Sales

Sponsors

Clark Boyce
incorporating
benseman murfit
Level 1, 104
Victoria Street
PO Box 11259
Christchurch, New
Zealand

**GLOBAL CULTURE
GROUP LIMITED**



Kolourcare
www.kolourcare.co.nz



meridian



**Jim Little
Upholstery**

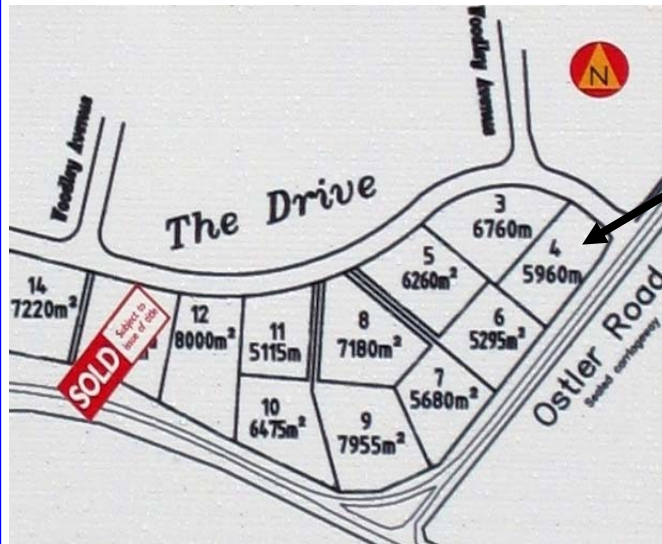


We are currently planning the car park and there may well have to be a series of short fences to provide the necessary protection.

Many of the tent sites for the 2008 NZ Secondary Schools Championship Regatta had been booked and all invoices have been sent.

Booking if confirmed on receipt of payment and this will be reviewed in early December. The current allocation is attached to this newsletter.

Raffle



This is the section to be raffled.
(Section No 4 on this plan)

The Raffle Committee has set up a volume sales incentive for Clubs and Schools. This will be a very good fundraising opportunity and we have had some keen interest in being involved. The current proposal is based on a 10% of sales incentive to participating groups with volumes in excess of 50 books of tickets.

The Committee expect to send out letters regarding this fundraising opportunity during the next two weeks.

Contacts

PO Box 3261
Christchurch

Email

Secretary@sir.org.nz

Chairman

P McQuinn
H 3 358 8938
M 27 239 5969

Secretary

P Bell
H 3 358 9929
M 27 432 5001

Course Manager

T Wilson
H 3 437 0908
M 21 134 1073

Complex

T 3 435 0628
F 3 435 0627

Facilities

Course Hire
Kitchen /
Lounge Hire
Souvenirs
Shop Sales

Sponsors



Jim Little
Upholstery



Tent Site allocation.

Site	ST SCHOOL/CLUB	Site	ST SCHOOL/CLUB
1	Villa Maria College	1a	
2	Westlake Boys/GIRLS	2a	Westlake Boys/GIRLS
3	Marsden School	3a	
4	Rangi Ruru Girls School	4a	
5	Rangi Ruru Girls School	5a	
6	Marlborough Boys / Blenheim RC	6a	Onslow College
7	St Bedes College	7a	
8	Wairau RC	8a	
9	Waikato Diocesan School	9a	St Hildas Collegiate
10	Craighead Diocesan School	10a	
11	Timaru Boys High School	11a	
12	Christchurch Girls High School	12a	Mt Aspiring High School
13	Otago Boys High School	13a	Paraparaumu College
14	Columba College	14a	
15	Oamaru RC	15a	
16	Otago Girls High School	16a	
17	Wakatipu Rowing Club	17a	
18	Burnside High School	18a	
19	Roncalli College	19a	
20	Christchurch Boys High School	20a	
21	Avonside Girls HS	21a	
22	Tauranga Girls College Rowing	22a	
23	St Margarets College	23a	Auckland Dio
24	Christ's College	24a	Kings College
25	Timaru Girls High School	25a	
W A L K W A Y			
26	Ashburton College	26a	
27	Nelson College for Boys	27a	
28	Nelson College for Girls	28a	
29	St Peters School	29a	
30	Westlake Girls	30a	
31	Marian College	31a	
32	St Andrews College	32a	St Kentigern Col
33	St Pauls Collegiate	33a	
34	Otumoetai College	34a	
35	Wellington College	35a	
36	Epsom Girls Grammar	36a	
37	Bethlehem College	37a	
38	Wellington Girls College	38a	
39	St Thomas of Canterbury	39a	
40	Wanganui Collegiate School	40a	
41	Sacred Heart Girls College	41a	
42	Te Awamutu College	42a	
43	MacLeans College	43a	
44	Queen Margaret College	44a	
45	Takapuna Grammar School	45a	
46	Kings High School	46a	