



South Island
Rowing

Newsletter

Issue No. 11

Date: June 2010

Principal Sponsor



Contacts

Postal

PO Box 3261
Christchurch 8140

Telephone

+64 3 435 0628

Email

Secretary@sir.org.nz

Management

Chairman

Cliff Buchanan
H 3 249 8404

Vice Chairman

James Sheehan
M 21 315 480

Secretary

Philip Bell
M 27 432 5001

Course Manager

Trevor Wilson
M 21 134 1073

Facilities

Course Hire
Lounge Hire
Clothing Sales
Souvenir Sales

Kolourcare

Page No 1



The above picture was taken in mid June at about 2:00 pm. The white ground is the permafrost that we occasionally get in Twizel. It may seem quite unbelievable that the lake could look like this after the conditions pictured last month. However while the ground is hard there is no chance of getting stuck.

The South Island Masters Regatta over Queens Birthday weekend meant that some improvements were in order. The 1000 meter start has had the first phase of it upgrade completed. More funding will see this progress further.

Over the last couple of months there have been a number of building activities. It is good to see some progress being made to further utilize the facilities here. This will continue into the following months in anticipation of being fully available for the coming season.

The SIR AGM is coming up on 31 July 2010. It is to be held at the Timaru Rowing Club Rooms in Rothwell St, Timaru. If the current weather patterns continue this could be a good move as access to the Mackenzie area could be difficult.

Course





The above picture shows the “finish” end of the course. Yes, the lanes are still down and the buoys in their traditional position. The course is the same as it was at the last regatta. It is quite interesting to observe the hardy few who take advantage of the flat water to keep their level of fitness up. The objective is not to fall in and apart from that, it is reported as being very pleasant rowing.

Regatta Dates

This continues to be a subject of debate. However, there have been applications received to run regattas on the various dates. The information below is the status at the time of writing.

DATE	REGATTA
25/09/2010	R2 K
26/09/2010	SI Interpro
16/10/2010	Aoraki
17/10/2010	Aoraki
20/11/2010	NZ Masters Twizel
21/11/2010	NZ Masters Twizel
11/12/2010	Regatta?
12/12/2010	Regatta?
15/01/2011	Meridian Canty Champs
16/01/2011	Meridian Canty Champs
29/01/2011	Meridian SI Champs
30/01/2011	Meridian SI Champs
15/02/2011	Nationals
20/02/2011	Nationals
12/03/2011	Meridian SIS
13/03/2011	Meridian SIS

The dates shown in black are those for which there have been confirmations received or in the case where SIR is hosting the regatta, agreement reached for the timing with the regatta owner.

Reporters Diary

Teenage crime is a cause for concern in today’s society. The following comments were sourced from a judge dealing with criminal youth offending:

I seem to be always hearing the cry of teenagers, “what can we do, were can we go?” My answer is: “Go home! Mow the lawn, wash the windows, learn to cook, build a raft, join a club, get a job, visit the sick, and study your lessons. And after you have finished, read a book.”

“Your town does not owe you recreational facilities: your parents do not owe you fun. The world does not owe you a living. You owe the world something. You owe it your time, energy and talent, so that no-one will be at war, in poverty or sick and lonely again.

In other words, grow up and stop being a cry baby, get out of your dream-world and develop a backbone to do something today. Someday is now and that someone is you!”

One concerned parent has responded by saying, “don’t blame the kids...this is what we created and we need to fix it so lets get started.





Issue No. 11
Date: June 2010

Principal Sponsor



Contacts

Postal
PO Box 3261
Christchurch 8140

Telephone
+64 3 435 0628

Email
Secretary@sir.org.nz

Management

Chairman
Cliff Buchanan
H 3 249 8404

Vice Chairman
James Sheehan
M 21 315 480

Secretary
Philip Bell
H 3 358 9929
M 27 432 5001

Course Manager
Trevor Wilson
M 21 134 1073

Facilities

Course Hire
Lounge Hire
Clothing Sales
Souvenir Sales

Buildings

As mentioned last month there has been a lot of building activity occurring at the lake and representatives from the four Local Associations have been briefed on these activities. Those at the AON MAADI Cup regatta would have seen the single "pink" building at the entrance. The picture on the right shows its relocated position adjacent to the Lindstrom Lodge. Those at the SI masters would have seen another three buildings on site and many of the piles on which they were to sit.



SIR has known for some years that the rowing capabilities on the lake far exceed the capability of the infrastructure to support such activities. There had been some tentative plans developed but factors such as cost put this way beyond any chance of realization. So, the old Saul Hall was used as a base for short term accommodation and training purposes.

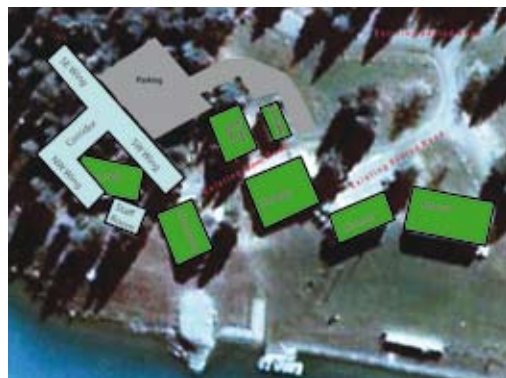
With the option of purchasing some suitable accommodation came an urgent review of what we could achieve and SIR decided to develop a Rowing Academy. This is a very ambitious project for SIR but appears to fill this big hole in the facilities available at Lake Ruataniwha. It is envisaged that this facility will draw a completely different set of people to Twizel and as such compliments and enhances Twizel as a destination. This will also add to the increased utilisation of the existing facilities in Twizel itself. The development is essentially a self-contained educational facility complete with lecture rooms, break out rooms with kitchen and toilet facilities. The picture above shows part of the Lakeside wing being lifted into position.



One of the first tasks on site was to remove the old Saul Hall from site. This has been sold to the nearby camping ground where it is understood that it will be upgraded and used for back-packer accommodation. The picture on the right shows the building being lifted off its piles in readiness for its short trip.



It is difficult to convey exactly how things are shaping up but the plan on the right shows how the development is to be realised on site. The buildings were sourced from the Southland institute of Technology's Wigram Campus and are ideally suited for this purpose. However, there are a few issues with the environment in Twizel and extra work has been necessary to have them made suitable.



The picture on the right gives some idea of the piling activity needed to accommodate the buildings.





The buildings generally cover part of the land Saul Hall occupied. The Picture on the right was taken from the road to Ohau Dam. The build locations can be seen above the boat launch area.



Sponsors

With the new buildings comes new opportunities for signage and sponsorship. SIR is very keen to hear from interested parties wishing to take up this opportunity.

Having read some recent publications extolling the success of rowing at all levels, it was most noticeable that facilities such as those at Lake Ruataniwha are seldom mentioned. But it is these sorts of facilities that are a major contribution to rowing success.

Further the volunteer organizations developing, operating and maintaining these facilities are seldom even acknowledged. SIR and no doubt our north island counterparts KRI, recognise the value of these facilities and fully acknowledge the support received from their sponsors.

SI Masters Regatta

Having a regatta at Queens Birthday Weekend is always going to be a challenge and the SI Masters was no different. It was unfortunate that the weather was an issue throughout NZ so the fog that beset proceedings on Saturday meant an early retirement to the local. Sunday dawned much better and a number of races were completed before the regatta was called off around 1500 hrs.

While it may look a little like the "Bitches Box" and it may have a "Dogs" life, the new starter's box for the 1000 meter start got its first outing at this Regatta.



From all accounts it worked well. Hopefully we will be able to make further improvements for the NZ Masters Regatta in November. From the reports received, the success of the social activities seemed to more than make up for any shortfall in the time available for rowing.

This rather foreboding scene is the Boat launch area in mid winter.

Please send any feedback, comments or contributions to the secretary.

