

Newsletter

Contacts

PO Box 3261
Christchurch

Email

Secretary@sir.org.nz

Chairman

P McQuinn
H 3 358 8938
M 27 239 5969

Secretary

P Bell
H 3 358 9929
M 27 432 5001

Course Manager

T Wilson
H 3 437 0908
M 21 134 1073

Complex

T 3 435 0628
F 3 435 0627

Facilities

Course Hire
Kitchen /
Lounge Hire
Souvenirs
Shop Sales

Sponsors



Level 1, 104
Victoria Street
PO Box 11299
Christchurch, New
Zealand



meridian



Jim Little
Upholstery



It is amazing just how quick the last month of the year comes around yet again. It does seem incredible that so much has been done to the course and yet we seem to require to have so much more done. It is really great to see the course looking so good and the continued cooperative efforts of those available to help with the work is greatly appreciated.

For many of the rowing fraternity, the end of the year usually represents exams and perhaps a day of reckoning and a time to plan for the future. We wish you well in your endeavours and look forward to seeing you rowing on Lake Ruataniwha.

This is the last newsletter for the year and on behalf of the Management Committee, may I wish you all a safe and prosperous festive season.

Course

All the new buoys have now arrived and the associated mounting hardware is now on hand as well. The existing buoys have been removed and ready for cleaning and refurbishing prior to relaying the course. There has been a lot of effort put into the course with lane wires, buoys and mounting hardware. They are now ready for reinstallation over the Christmas break.

The laying of the course usually occurs over the Christmas period. Trevor and Catherine have indicated they will be on hand to do this work and would welcome any assistance. If you are holidaying in the area and can afford a few hours to assist with this work, look them up.

Environmental Protection

Didymo (aptly called rock snot) is a major problem in the area and we understand it is spreading. "**Check, Clean, Dry**" is the best way to protect the environment.

For details on Didymo, see

<http://www.biosecurity.govt.nz/pests-diseases/plants/didymo/index.htm>

Fire is also an issue as the temperatures rise. There will be a fire ban in place but even without that care around fires is essential.

Safety

We cannot compromise on safety and This begins with **you!** As mentioned last month, we have to be more vigilant so please make sure you know the requirements to ensure you are allowed to row.

The conditions associated with entering any of the regattas on the lake will detail the requirements and they must be obeyed. Please note that every regatta on the lake will be sanctioned by Rowing New Zealand and those running the regatta are required to ensure this is done.

Further, SIR has the responsibility to ensure the sanctioning rules are complied with. A failure here jeopardises the future use of the facility so it must be stressed that compliance is mandatory. So Coaches, Officials and participants, please do your part here.

Contacts

PO Box 3261
Christchurch

Email

Secretary@sir.org.nz

Chairman

P McQuinn

H 3 358 8938

M 27 239 5969

Secretary

P Bell

H 3 358 9929

M 27 432 5001

Course Manager

T Wilson

H 3 437 0908

M 21 134 1073

Complex

T 3 435 0628

F 3 435 0627

Facilities

Course Hire

Kitchen /

Lounge Hire

Souvenirs

Shop Sales

Sponsors

Clark Boyce
incorporating
bensenman murfit

Level 1, 104
Victoria Street
PO Box 11259
Christchurch, New
Zealand



GLOBAL CULTURE
GROUP LIMITED



meridian



Jim Little
Upholstery



Fencing

As many will know, a contract was let to fence the property to protect the equipment, reduce the dumping of rubbish and minimise potential injury claims. We thank the

Mackenzie District Council for their assistance with achieving this goal.

The picture (Right) shows the installation along Max Smith Drive from the Northern boundary towards the boat park end of the property.



The picture on the left shows the fence at the 1500 meter location looking towards the finish. The last tent site will be against this fence. A barrier can be closed to ensure



those viewing the rowing are not placed in jeopardy by those trying to drive down the road and watching the rowing at the same time! You can also not the two levels for the tent sites as well from this picture.

It appears that many people have not read the previously released information regarding the decision to erect a fence around the north facing boundary's of the SIR Property. As many of you will appreciate, this is private property and SIR has agreed to allow access to the lake over its property. However, there are major health and safety issues that accompany that decision and SIR is not able to take on the associated liability. There are numerous hazards on the property and we do not have the capacity to rigorously monitor and direct people accordingly. Therefore we must constrain access to the entry locations where we can be sure there are no unmarked hazards on the access way to the water front.

As an example, we have seen trail bikes travelling quickly through the area. They could easily be injured on a boat rack or injure innocent pedestrians so in the interests of safety, a fence with suitably located gates was the most logical solution. We have also evidence of dumping of waste material and hazardous substances on the property and SIR cannot afford the costs to remove these materials to the appropriate location.

It was based on these and other similar arguments that the decision to erect a fence was taken. This has been explained to the some members of the Community Board and Council Staff and they have been in agreement with this work.

South Island Schools Championship Regatta

As many of you will know from the NZSSRA Annual General Meeting, this regatta is being held as a championship regatta under the NZSSRA Rules. We understand this was the decision of the delegates present and SIR is investing heavily into the regatta to meet the requirements that stem from that decision.

Contacts

PO Box 3261
Christchurch

Email

Secretary@sir.org.nz

Chairman

P McQuinn
H 3 358 8938
M 27 239 5969

Secretary

P Bell
H 3 358 9929
M 27 432 5001

Course Manager

T Wilson
H 3 437 0908
M 21 134 1073

Complex

T 3 435 0628
F 3 435 0627

Facilities

Course Hire
Kitchen /
Lounge Hire
Souvenirs
Shop Sales

Sponsors

Clark Boyce
incorporating
benseman murfit

Level 1, 104
Victoria Street
PO Box 11229
Christchurch, New
Zealand

**GLOBAL CULTURE
GROUP LIMITED**



Kolourcare
The #1 choice for
all your painting needs
www.kolourcare.co.nz



meridian



**Jim Little
Upholstery**



Pub Charity
THE HEART OF COMMUNITY FUNDING



This means that it will be a competition between schools and the composite crews (especially those where several schools combine under one club) will no longer be able to compete. There will also be medals for the first, Second and third placed crews.

These changes make it quite different to the regatta of previous years and more expensive than the South Island Club Championships. However we trust this meets the needs of the participant schools.

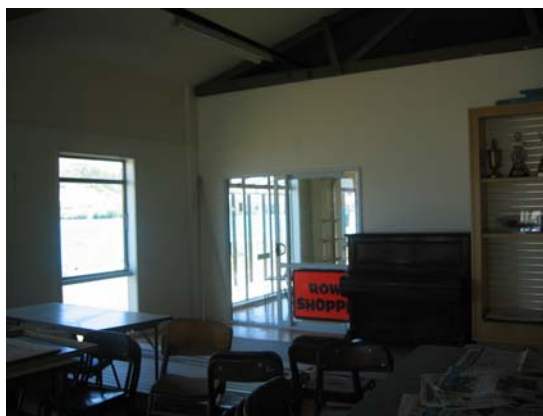
Row Shoppe

Many of you will recall the location of the Row Shoppe where souvenirs and other memorabilia can be purchased. As part of the audit of our processes, there has to be some rationalization of our activities. This coupled with the desire to make the whole area more attractive has led to a significant change to the shop layout.

As its name suggests, it is a shop and needs to have the look and feel of a shop. Further, we need to make sure that we track our assets better to ensure improved financial management.

In that sense, we need to make sure that we sell the programmes from this location and also take any other payments here as well. This is aimed at making the audit process better as well.

The following pictures show a little of the changes that have been implemented here and there are more to come. One of the first changes was to install a door between the MacRae Lounge and the shop as shown in the picture on the right. While there are changes to be completed in the MacRae Lounge, this access will allow a flow through of foot traffic. The picture below shows the counter has changed location and is much smaller. Included in the work yet to be done is carpeting the floor and the installation of more lights. You can also note the skiff on the roof which adds to the ambience.



Contacts

PO Box 3261
Christchurch

Email

Secretary@sir.org.nz

Chairman

P McQuinn

H 3 358 8938

M 27 239 5969

Secretary

P Bell

H 3 358 9929

M 27 432 5001

Course Manager

T Wilson

H 3 437 0908

M 21 134 1073

Complex

T 3 435 0628

F 3 435 0627

Facilities

Course Hire

Kitchen /

Lounge Hire

Souvenirs

Shop Sales

Sponsors

Clark Boyce

incorporating
benseman murfit

Level 1, 104
Victoria Street
PO Box 11299
Christchurch, New
Zealand



GLOBAL CULTURE
GROUP LIMITED



meridian



Jim Little
Upholstery



We are greatly indebted to Marcus Annan of Opto Display Systems Ltd for his assistance with the fitting out of the shop.

Logo

For several months, some development work has been undertaken with our logo. The current logo has proven to be too difficult and expensive to use on a wide scale.

Specifically, it was not really suitable for embroidering onto garments or even placing onto the medals. However, we did want to preserve many of the elements of the current logo. These included the representation of the four Associations, the mountains that are typical of the area and the waves that are associated with the lake.

The result is the logo shown at the right of the page which seems to fit the bill so to speak. This has now been approved for use by the four South Island Rowing Associations and we have received a number of favourable comments. A greyscale version has also been developed as the colour one does not easily print with a black & white printer.



We wish to thank all those concerned with the development of the logo.

Raffle

The Raffle Committee has set up a volume sales incentive for Clubs and Schools. This will be a very good fundraising opportunity and we have had some keen interest in being involved. The current proposal is based on a 10% of sales incentive to participating groups with volumes in excess of 50 books of tickets.

The Committee expected to send out letters regarding this fundraising opportunity during the last two weeks of November but due to some unfortunate circumstances, this was not achieved. If you are interested in taking advantage of this opportunity, please let the Secretary know.

Iron Lung

For the uninitiated, this is the building at the start. There is no doubt that this is an essential part of our operation and the exterior was in dire need of repair. A decision earlier in the year was made to re-clad it with colour steel. Rod Densem from Southern Colour Steel Buildings completed this at the last working bee. But further work has been identified so there will have to be some investigation here.

We are also aware that with the Maadi Cup Regatta being so late this year, we need to provide better protection for those at the start. To do this, we need Electricity in sufficient quantity to power a hot water urn and a couple of heaters. This is currently under investigation with Alpine Energy.

Contacts

PO Box 3261

Christchurch

Email

Secretary@sir.org.nz

Chairman

P McQuinn

H 3 358 8938

M 27 239 5969

Secretary

P Bell

H 3 358 9929

M 27 432 5001

Course Manager

T Wilson

H 3 437 0908

M 21 134 1073

Complex

T 3 435 0628

F 3 435 0627

Facilities

Course Hire

Kitchen /

Lounge Hire

Souvenirs

Shop Sales

Sponsors



Level 1, 104
Victoria Street
PO Box 11229
Christchurch, New
Zealand



**Jim Little
Upholstery**



Tent Site allocation.

Site	ST SCHOOL/CLUB	Site	ST SCHOOL/CLUB
1	Villa Maria College	1a	.
2	Westlake Boys/GIRLS	2a	Westlake Boys/GIRLS
3	Marsden School	3a	.
4	Rangi Ruru Girls School	4a	.
5	Rangi Ruru Girls School	5a	.
6	Marlborough Boys / Blenheim RC	6a	Onslow College
7	St Bedes College	7a	.
8	Marlborough Girls College / Wairau RC	8a	.
9	Waikato Diocesan School/Timaru RC	9a	St Hildas Collegiate
10	Craighead Diocesan School	10a	.
11	Timaru Boys High School	11a	.
12	Christchurch Girls High School	12a	Mt Aspiring High School
13	Otago Boys High School	13a	Paraparaumu College
14	Columba College	14a	St Marys College
15	Waitaki Girls/Boys/St Kevins/ Oamaru RC	15a	.
16	Otago Girls High School	16a	.
17	Wakatipu Rowing Club	17a	.
18	Burnside High School	18a	.
19	Roncalli College	19a	.
20	Christchurch Boys High School	20a	.
21	Avonside Girls HS	21a	.
22	Tauranga Girls College Rowing	22a	.
23	St Margarets College	23a	Auckland Diocesan School
24	Christ's College	24a	Kings College
25	Timaru Girls High School	25a	.
W A L K W A Y			
26	Ashburton College	26a	.
27	Nelson College for Boys	27a	.
28	Nelson College for Girls	28a	.
29	St Peters School	29a	.
30	Westlake Girls	30a	.
31	Marian College	31a	.
32	St Andrews College	32a	St Kentigern Col
33	St Pauls Collegiate	33a	.
34	Otumoetai College	34a	.
35	Wellington College	35a	.
36	Epsom Girls Grammar	36a	.
37	Bethlehem College	37a	.
38	Wellington Girls College	38a	.
39	St Thomas of Canterbury	39a	.
40	Wanganui Collegiate School	40a	.
41	Sacred Heart Girls College	41a	.
42	Te Awamutu College	42a	.
43	MacLeans College	43a	.
44	Queen Margaret College	44a	.
45	Takapuna Grammar School	45a	.
46	Kings High School	46a	.